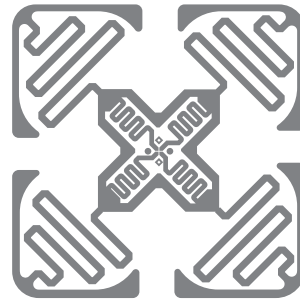


# DATASHEET

**RS-HYH47M4E-2**  
UHF RFID Dry Inlay

## KEY DATA

Chip: Monza M4E  
Antenna Size: 44 × 44 mm  
Format: Dry Inlay, Wet Inlay,  
White Paper



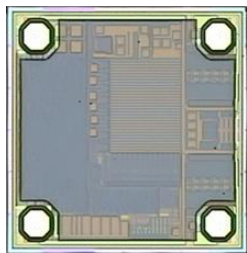
**RS-HYH47M4E-2**

## APPLICATION

Supply Chain & Logistics Management  
Warehouse Management



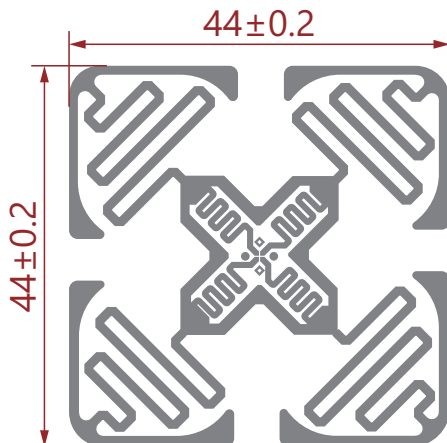
## OVERVIEW



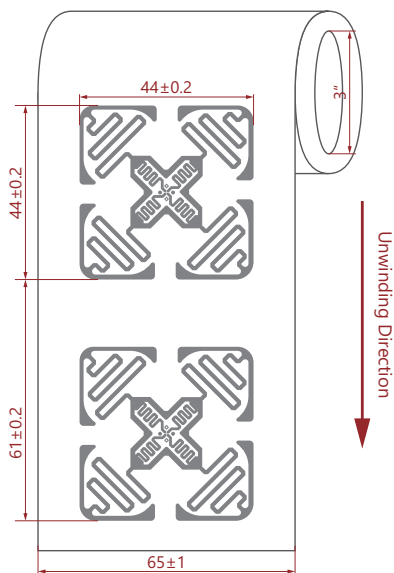
RS-HYH47M4E-2 UHF RFID Dry Inlay is built with Impinj Monza 4E.

Monza 4E tag chips offer up to 496 bits of EPC memory, 128 bits of User memory, and a serialized TID to provide fast access to a larger memory, as well as meet the needs of applications requiring greater than 96 bit EPC numbers. Monza 4E also provides True3D antenna support.

## DIMENSIONS

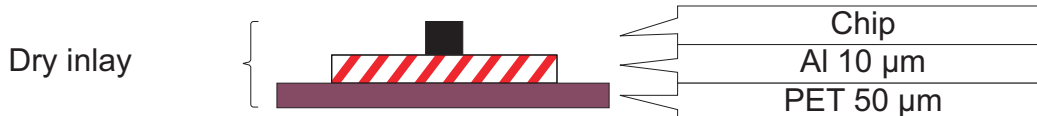


## ORIENTATION



Physical characteristics	Dimensions
Antenna size	44 × 44 mm
Inlay pitch	61 mm
PET width	65 mm
Material thickness	Al 10 μm + PET 50 μm
Reel detail	Web width: 65 ± 1.0 mm Inner core diameter: 3" (76.2 mm) Core thickness: 5 ± 2 mm

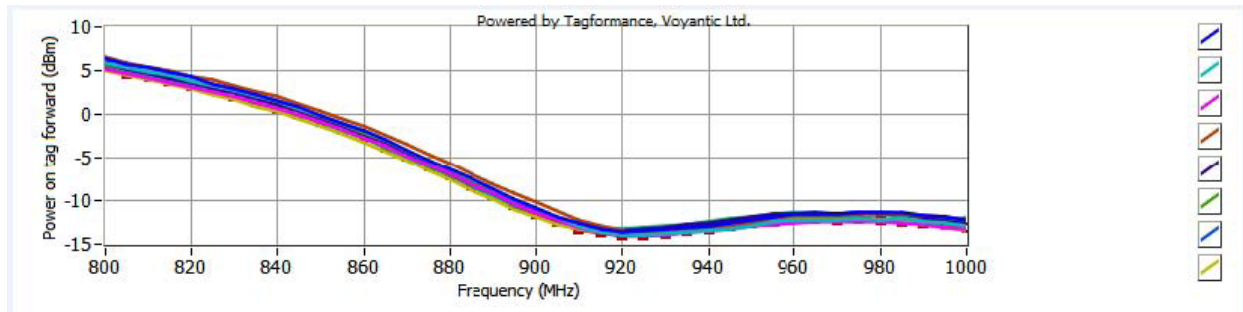
## STRUCTURE



## ELECTRICAL CHARACTERISTICS

Item		Description
Manufacture/IC		Impinj Monza 4E
Base Material		PET
Antenna		Etched Al (10 μm) + PET (50 μm)
Protocol		RAIN RFID / ISO 18000-6C and EPC global Gen2v2 Compliant
Memory	User	128 bits
	TID	48 bits
	EPC	496 bits
	Password	Kill Password - 32 bits
Access Password - 32 bits		
Frequency		860 ~ 960 MHz
Operating Mode		Passive
IC Life		100,000 Programming cycles, 50years data retention
ESD Voltage Immunity		Max. 2000 V

## POWER ON TAG FORWARD



## ENVIRONMENTAL REQUIREMENT

- Operating Temperature/Humidity:  $-5^{\circ}\text{C} \sim 60^{\circ}\text{C}$  / 20% ~ 80% RH
- Storage Temperature/Humidity:  $20^{\circ}\text{C} \sim 30^{\circ}\text{C}$  / 20% ~ 60% RH
- Shelf Life: From the date of manufacture, 1 year in anti-static bag at  $20^{\circ}\text{C} \sim 30^{\circ}\text{C}$  / 20% ~ 60% RH, and avoid direct sunlight exposure

## PACKAGING

Reference Packing: Static-free bag with zipper; 5000  $\pm$  100 Pcs/roll, 4 rolls/ctn (Actual Qty as per Shipping Mark).

